

# WELD BRUSH

FOR BYMAT STAINLESS STEEL CLEANERS.



The **Weld Brush** has been developed for use on existing BYMAT stainless steel cleaning machines using the same, environmentally friendly, electrolytic solutions.

When fitted to the Bymat 1124 machine weld cleaning, with the **Weld Brush**, can be performed using the 'Dark Marking setting'.  
When fitted to the Bymat 1024 machine both cleaning and polishing of welds is possible, by adjusting the voltage and using existing settings.

Simply dip into the solution and wipe across the weld area for fast efficient cleaning.

The **Weld Brush** complements the already highly successful range of Bymat weld cleaning products and is ideal for getting into tight areas or cleaning intricately shaped small parts.

The **Weld Brush** bristles are constructed from a carbon fibre super conductor for unbeatable performance. The Body is fitted with a protective sleeve to prevent 'shorting out' and the handle is lightweight, comfortable to use, and available in two sizes.

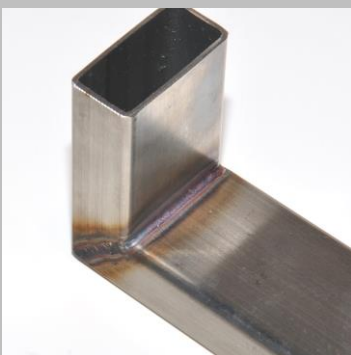
Manufactured in the UK and available from stock.

Remember that Bymat machines have been on the market for over a decade with a proven track record of outstanding performance. Bymat machines also use the cleaning pad system and can perform light and dark marking onto the work piece, which some competitors machines cannot do. This makes the Bymat machine the most versatile cleaner on the market.

The **Weld Brush** is also directly compatible with some other makes of machines.



Replaceable brush heads



Before Cleaning



During Cleaning



After Cleaning

## **BH Tungsten Grinders**

Unit 4 Redcomb Business Park  
Desford Road  
Enderby, Leicester  
LE19 4AD  
Tel: 0116 2864342  
Fax: 0116 2864326  
Mobile: 07931557087